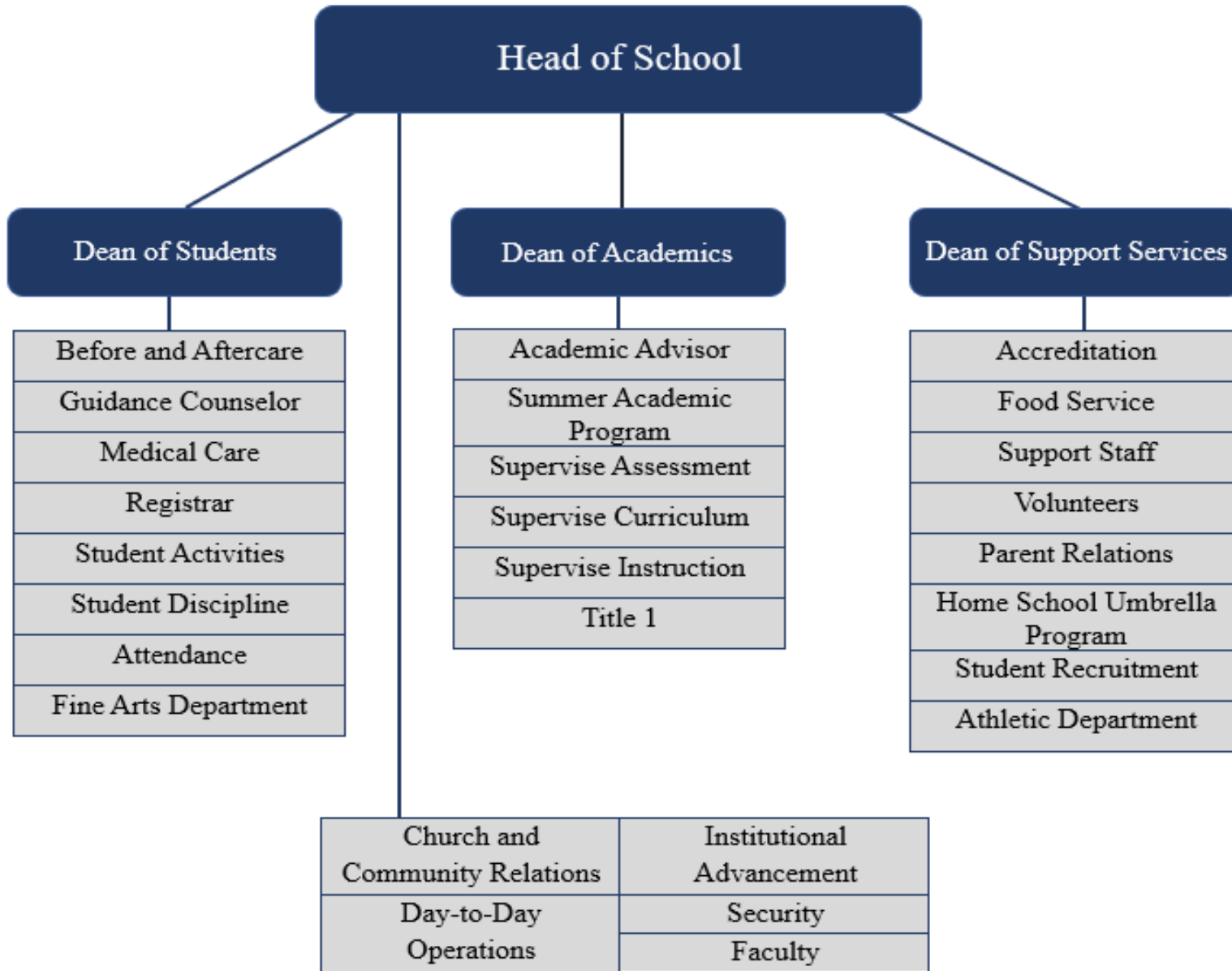


# FCA Organization Flow Chart



**Dean of Students**

- Before and Aftercare
- Guidance Counselor
- Medical Care
- Registrar
- Student Activities
- Student Discipline
- Attendance
- Fine Arts Department

**Dean of Academics**

- Academic Advisor
- Summer Academic Program
- Supervise Assessment
- Supervise Curriculum
- Supervise Instruction
- Title 1

**Dean of Support Services**

- Accreditation
- Food Service
- Support Staff
- Volunteers
- Parent Relations
- Home School Umbrella Program
- Student Recruitment
- Athletic Department

Church and Community Relations	Institutional Advancement
Day-to-Day Operations	Security
	Faculty